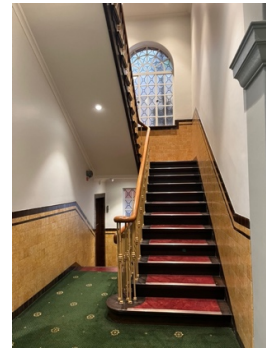


Beautifully renovated consulting room available for sublease

Ballow Chambers.



Ballow Chambers is an historic building in the heart of Brisbane's medical and allied health specialist precinct of Wickham Terrace. It is easily accessible by public transport, located directly across the road from Central Station. There are numerous secure parking options nearby (at an additional cost).

Our freshly renovated, three-room, suite offers a peaceful and private waiting room for clients, separate administrative area with EFTPOS and printing, and a small kitchenette for staff. Rent includes use of fax, internet, and printing facilities. Some basic stationary and other essentials are supplied. Reception and admin services are *not* provided.

The suite layout has been carefully designed and purpose-built for counselling and psychotherapy practice. The separate waiting room provides additional privacy: sound does not travel from the rooms, and patients do not cross paths in the waiting area, as there is a separate exit door. This layout not only adds to privacy, but also ensures security of the rooms, as only those with a key can enter the admin and kitchen area or the consulting rooms.

The rooms would suit practitioners of counselling and psychotherapy who wish to enjoy the best of both worlds, with the freedom and autonomy of independent practice, in a friendly and supportive setting. Peer supervision may be available, with potential for Psychologists to count some supervision hours towards clinical endorsement where appropriate.

Fees are dependent on the times/days to which the subtenant commits. Times on each day from Monday through Saturday available from September 2022.

For more information on availability and rates, please contact **Elizabeth King** on ph: 0400 035 001 or e-mail: info@elizabethkingpsychologist.com or **Sarah McCarthy** on ph: 0408 765 970 e-mail: sarah@resonatepsychology.com.au

